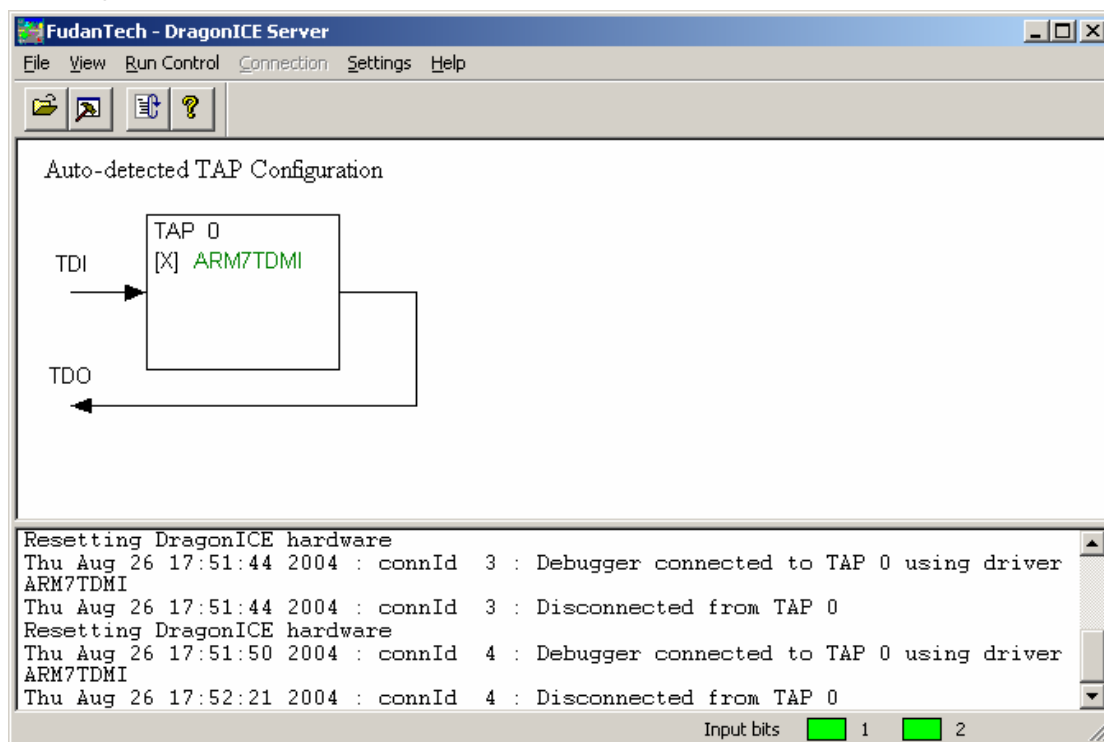


## Connecting Dragon-ICE to IAR Debugger

### 1. Start Dragon-ICE Server

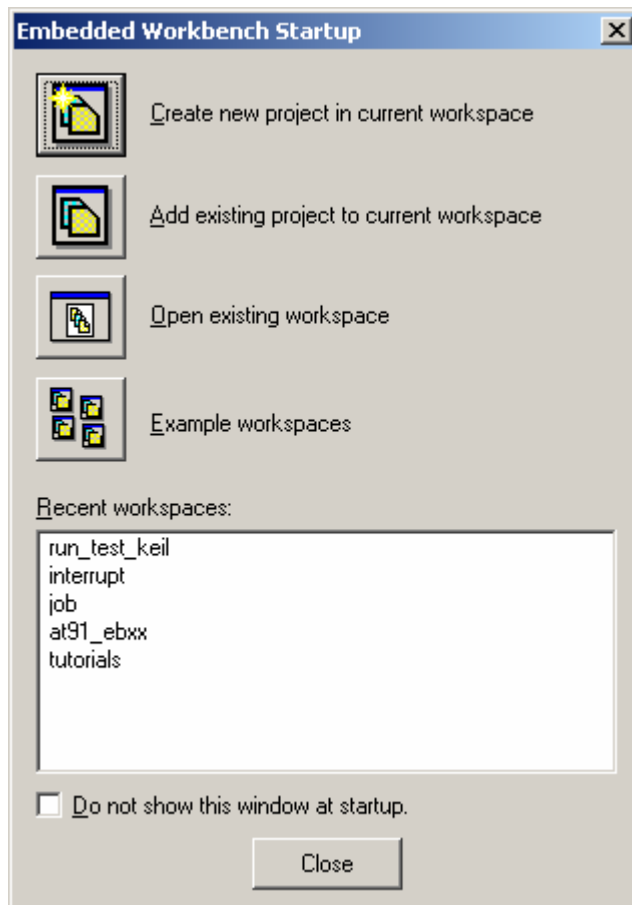
You first install Dragon-ICE Server (We provide), then start it, as following.

Connect Target board, click Auto-configure or Manual configure target, as follow (target is ARM7TDMI)

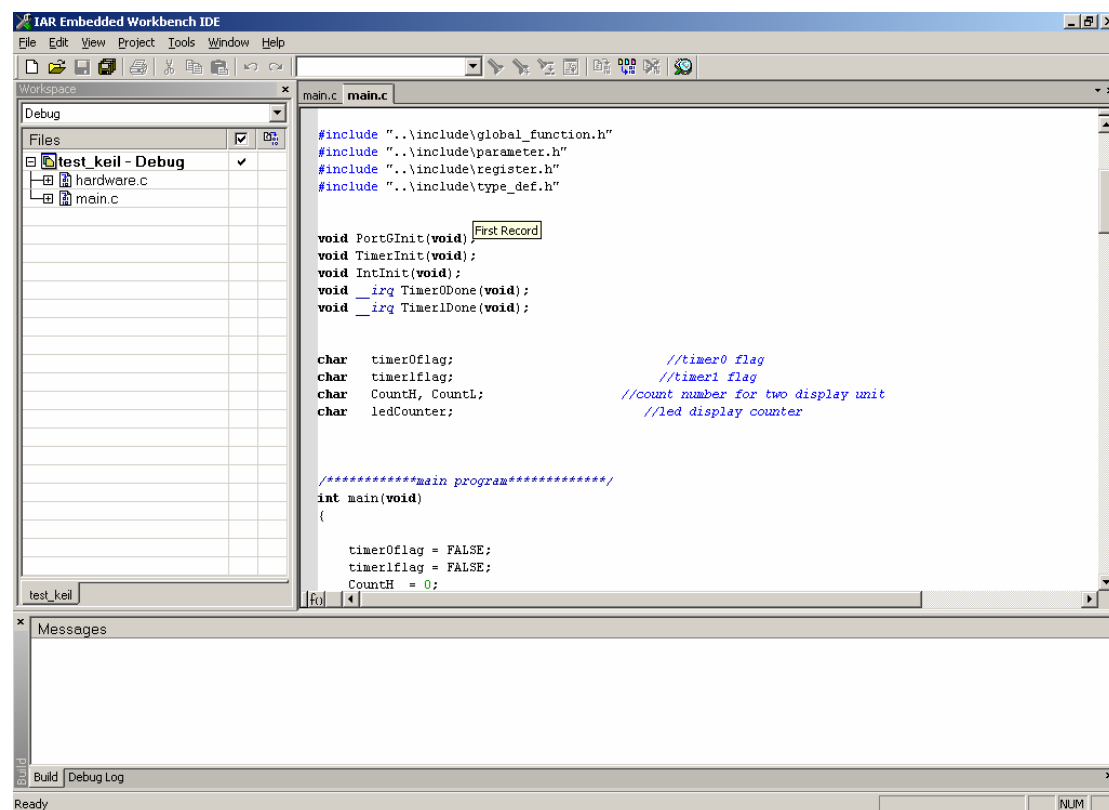


## 2. Starting IAR workbench and connecting Dragon-ICE Server

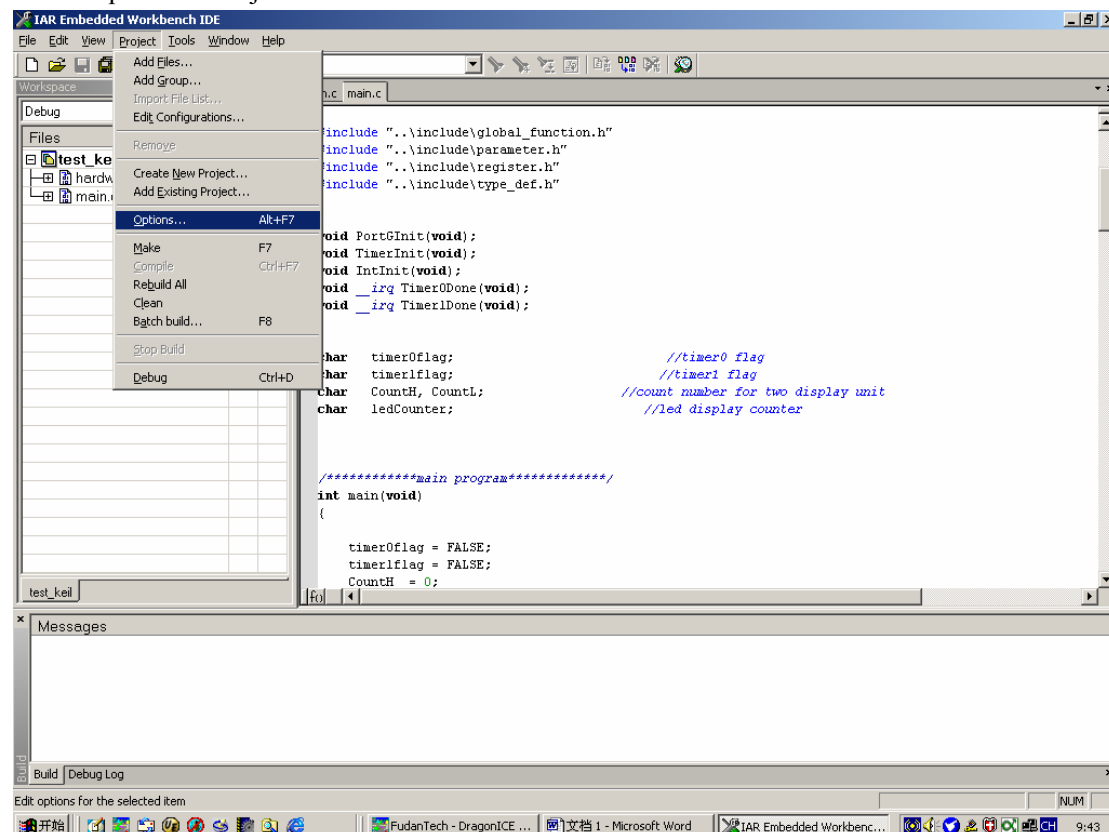
Open IAR workbench, as the following shows:



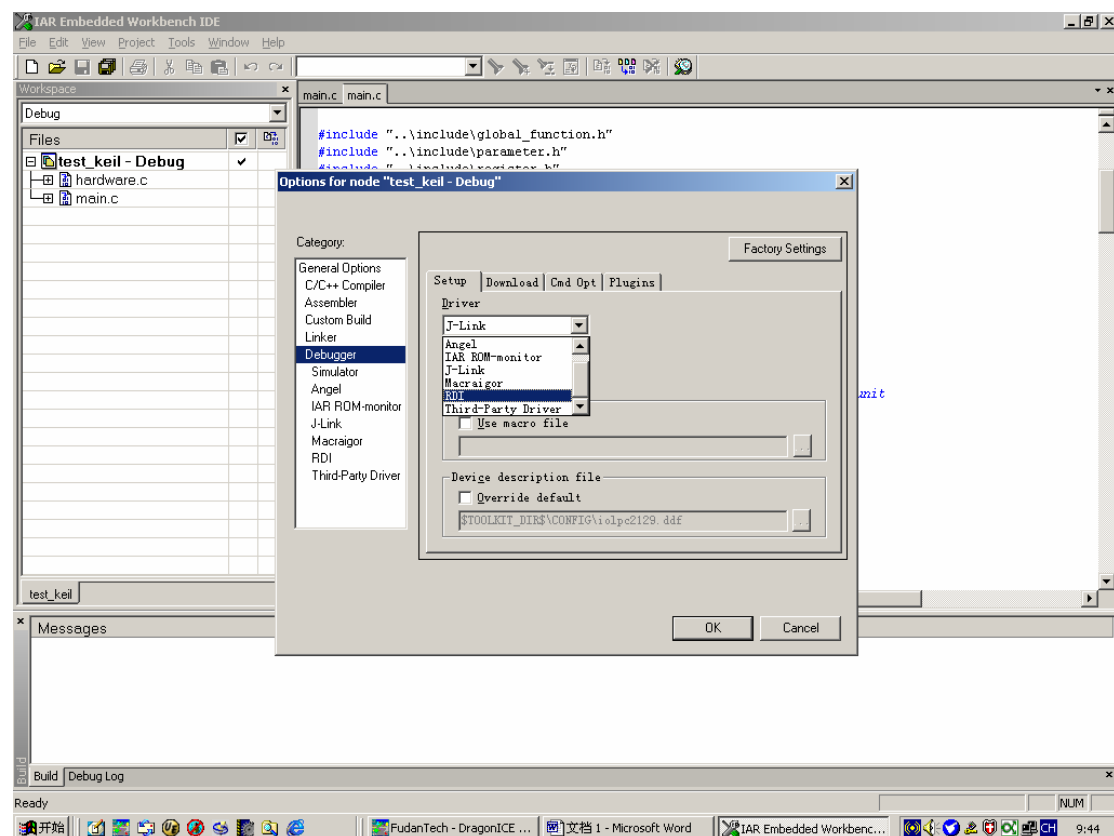
Selected "Open existing workspace", open an existing project, as the following shows:



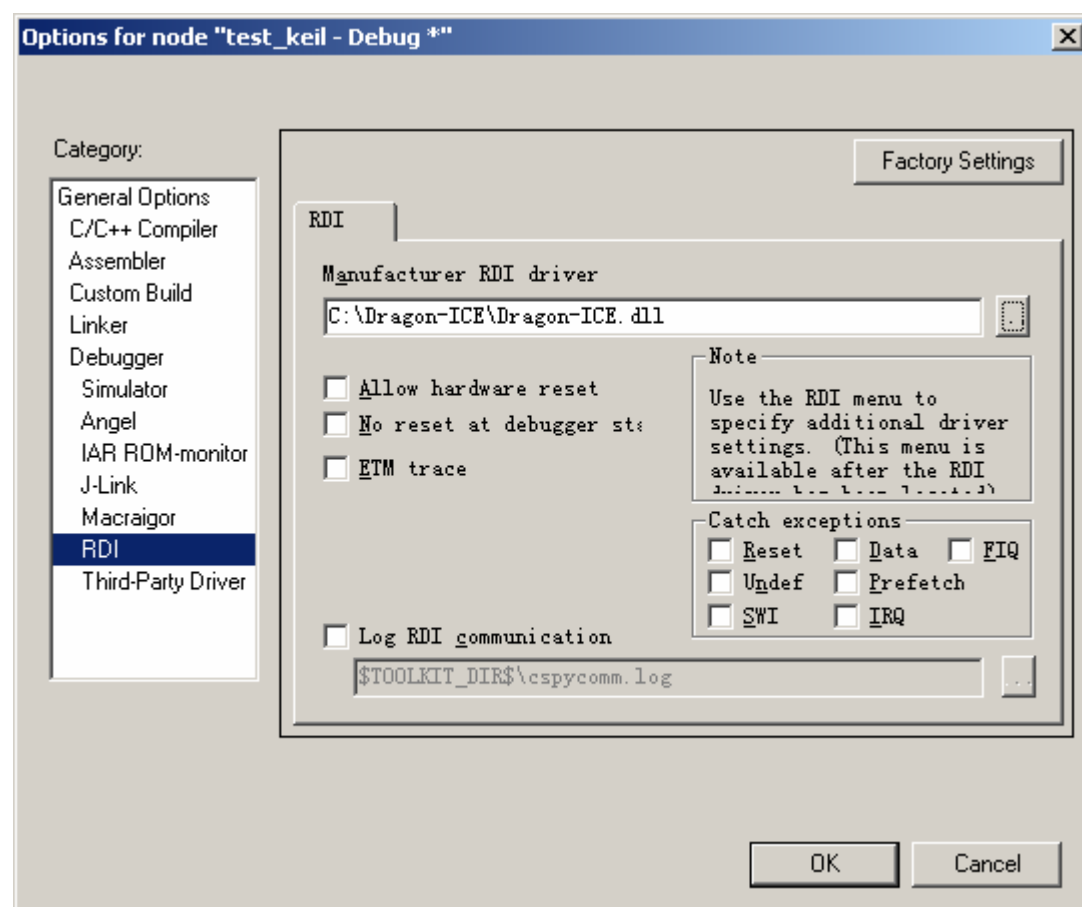
### Select Options in Project:



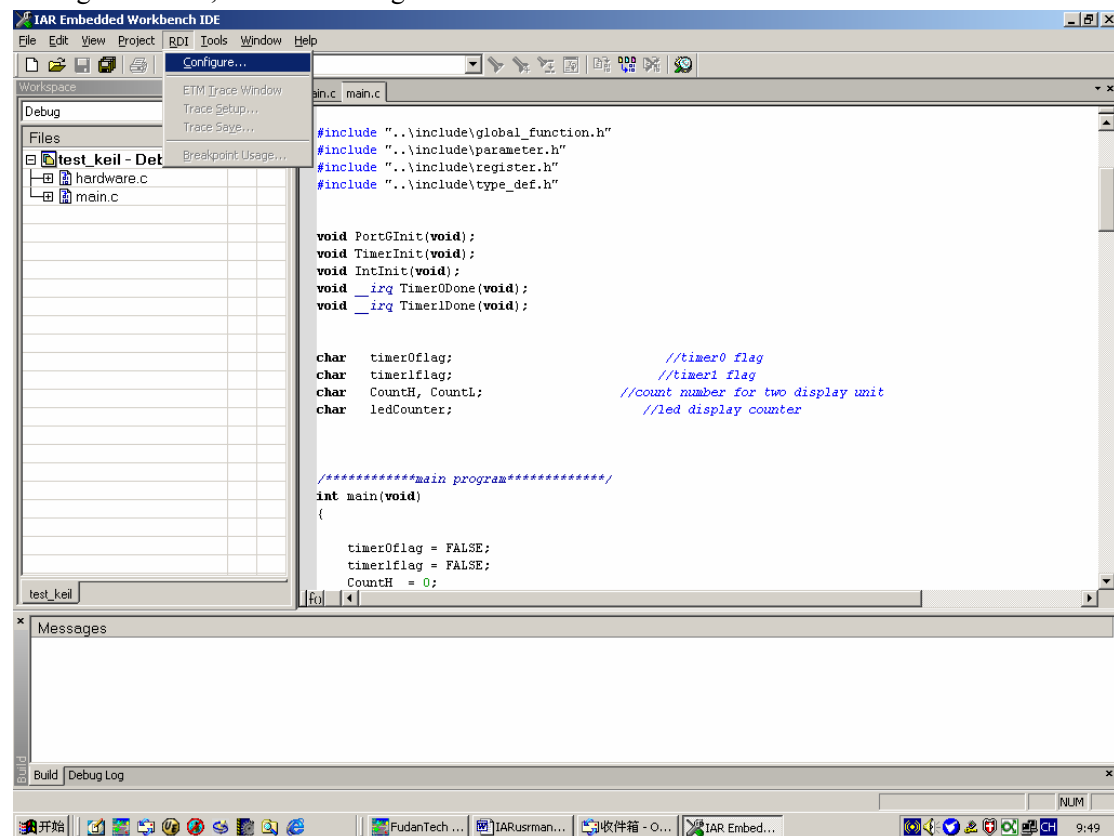
Select Debugger, and select RDI in Setup—Driver, the detail operation as the following shows:



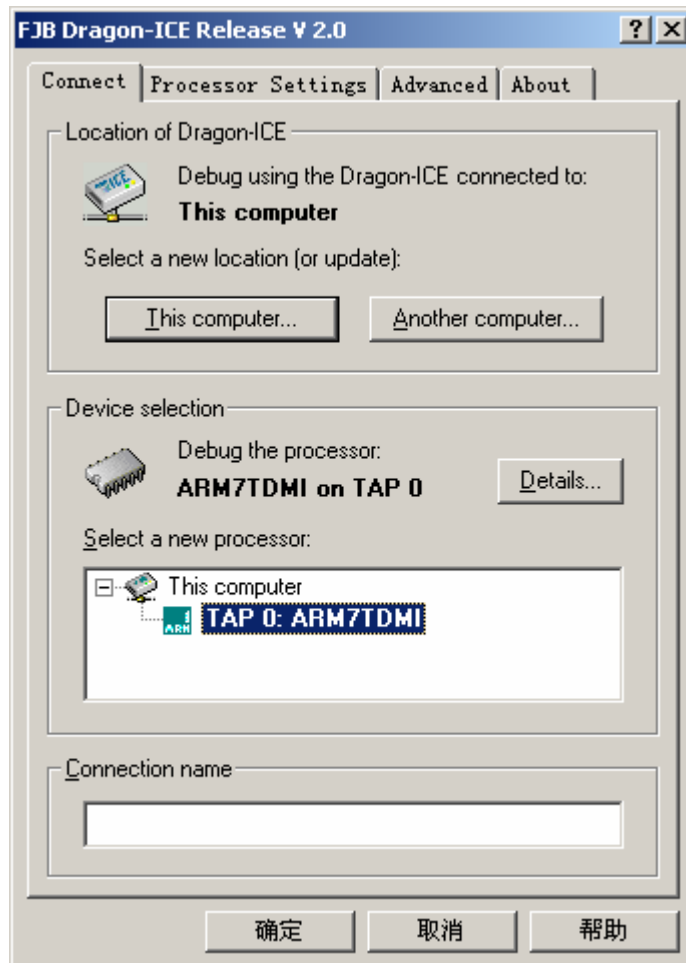
And then find out the DLL of our emulator in RDI option, as the following shows.



Press OK and go into the following figure, we can see the current menu has RDI option, and select Configure in RDI, as the following shows:



We have finished the connecting of ICEserver and IAR, as the following shows:



Finished the series of the work, we can go into the Debug, as the following shows:

